

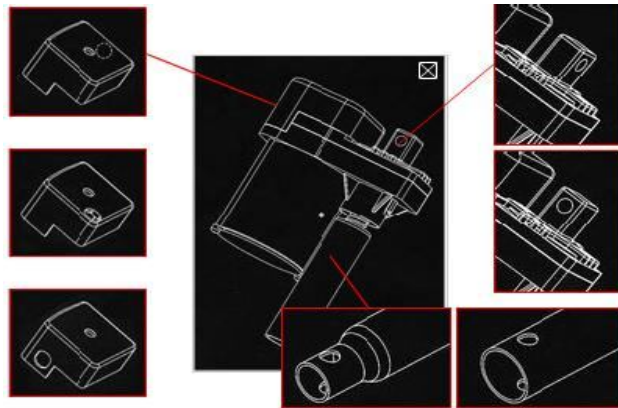


JS18

Model: JS18	
Input Voltage	110 or 220 VAC 50/60 Hertz
Load Capacity Thrust	800 Pounds (3500 Newton's)
Travel Speed Inch per Second (mm per sec)	0.18 to 0.54 Inch per sec (4.6 to 13.7mm)
Operating Temperature	40 to 60°C
Duty Cycle	1 Minute On 8 Minutes Off
Thermal Protector Rating	105°C +/- 5°
Stroke	Customer Defines
Capacitor	Electrolytic, Internal Mounting
Feedback Potentiometer, Optical, Reed	Optional, Internal mounting

Options:

- Adjustable Cam
- Feedback
- Cord set output
- Dust Cover
- Brake



Applications:

- Treadmills
- Adjustable Work Stations
- Adjustable TV Stands
- Adjustable beds

Drawing

